

## 06. Dual Compression Mounts

### Enhanced Rubber Vibration Isolators



Dual compression mounts use two rubber elements working in compression to improve vibration damping, stability, and load distribution. They are suitable for machinery where stable mounting and reduced floor transmission are both important.

<b>Category</b>	Compression Mountings
<b>Load Class</b>	Moderate to heavy equipment requiring stable support
<b>Tags</b>	Pumps, Fans, Compressors, Engine Mounts, Vehicle Chassis

#### Key Features

- Dual rubber element construction
- Stable mounting with even load distribution
- Rugged steel housing with protective finish
- Good damping performance for rotating equipment

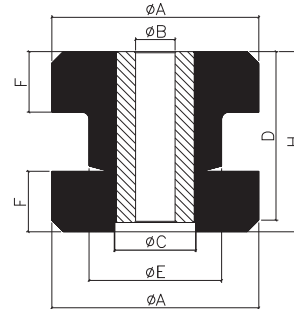
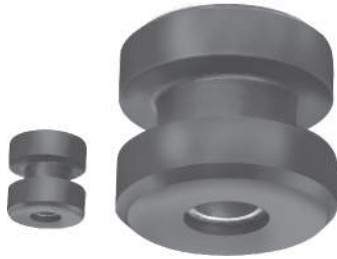
#### Typical Applications

- Centrifugal pumps, gear pumps, and pump skids
- Industrial fans and blowers
- Small to medium compressors and electric motors
- Radiators, engine mounts, packaging machines, and vehicle chassis

# DUAL COMPRESSION MOUNTS PH

# POLYBOND

Moulding Innovation into Global Bonds



PART NO		AXIAL LOAD (Kg)	DEFL. (mm)	DIMENSIONS (mm)						
				ØA	ØB	ØC	D	ØE	F	H
PH-1	A	30	1.3	33.3	10.3	15	31.8	20.1	12.3	34
PH-1	B	41	1.3	33.3	10.3	15	31.8	20.1	12.3	34
PH-1	C	64	1.3	33.3	10.3	13	31.8	20.1	12.3	34
PH-1	D	113	1.3	33.3	10.3	15	31.8	20.1	12.3	34
PH-2	B	80	1.8	47.8	13.5	19	49.3	32.5	20.4	49.5
PH-2	C	109	1.8	47.8	13.5	19	49.3	32.5	20.4	49.5
PH-2	D	172	1.8	47.8	13.5	19	49.3	32.5	20.4	49.5
PH-3	B	135	2.2	64.8	16.7	24.6	61.7	40.1	22.9	63.8
PH-3	C	181	2.2	64.8	16.7	24.6	61.7	40.1	22.9	63.8
PH-3	D	226	2.2	64.8	16.7	24.6	61.7	40.1	22.9	63.8
PH-3	E	328	2.2	64.8	16.7	24.6	61.7	40.1	22.9	63.8
PH-4	A	122	2.5	89	23.8	35	73.4	57	26	77.5
PH-4	B	321	2.5	89	23.8	35	73.4	57	26	77.5
PH-4	C	350	2.5	89	23.8	35	73.4	57	26	77.5
PH-4	D	531	2.5	89	23.8	35	73.4	57	26	77.5
PH-5	A	725	2.3	124	27	37.8	85.9	64.8	31.8	85.9
PH-5	B	1000	2.3	124	27	37.8	85.9	64.8	31.8	85.9
PH-5	C	1280	2.3	124	27	37.8	85.9	64.8	31.8	85.9
PH-5	D	1565	2.3	124	27	37.8	85.9	64.8	31.8	85.9

